



## FROST PROTECTED EYE SHOWER

A frost protected eye wash unit suitable for use in temperatures below freezing. This eye wash unit is activated by pulling down the protective cover which automatically starts the two eye wash jets. The spray pattern conforms to both the ANSI and EN standards governing emergency eye wash equipment.

The unit is kept above freezing by the use of doubly redundant trace tape heating. This is surrounded by a polyethylene insulated jacket which in turn is housed in a tough stainless steel outer casing. The use of stainless steel, rather than plastic outer casing means the SSP eye shower is longer lasting and more resilient than most models on the market.



## KEY FEATURES

### All Stainless Design

The shower pipe, casing, fittings and valves are all made from high quality, durable stainless steel. This means our showers last longer than many competitor products which use cheaper plastics. This is particularly true when they are situated outdoors and exposed to the elements.

### Redundant Trace Tape

The frost protection trace tape used in our showers is “over speced”. This means that the tape does not have to work hard to maintain frost protection even in very cold conditions.

### High Quality Insulation

We use high quality polyethylene insulation as opposed to cheaper EPS. Polyethylene has one of the highest R ratings of any insulation meaning that the heating element needs to do less work, reducing running costs and trace tape life.

### Meets EN and ANSI Standards

Our frost protected eye showers are built to meet and exceed both the EN15154-1 and ANSI Z358.1 standards.

### ATEX

ATEX compliant models available

### Technical Details

Pipe inlet	1 1/4" BSP male
Operating pressure	2-8 bar
Eye wash flow rate	16 l/min
Test Pressure	10 bar
Electrical supply	M20/25x1,5 cable entry



## STANDARDS

ANSI Z358.1 This shower will meet the ANSI standard if fitted with the 80 l/min shower head.

EN15154-1 This shower will meet all EN standards.

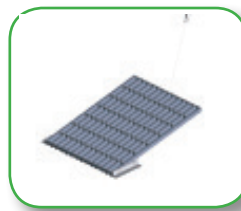
With both standards there are elements governing the positioning, deployment and alarm systems that may need to be met by adding elements from the options below which will depend on each individual situation. Please speak to our experts to determine which are necessary to meet your company's obligations

## MATERIALS OF CONSTRUCTION

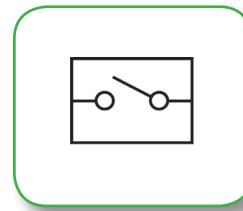
<b>Main shower pipework</b>	<b>Stainless steel</b>
<b>Fittings</b>	<b>Stainless steel</b>
<b>Valves</b>	<b>Stainless steel</b>
<b>Eye shower covered casing</b>	<b>ABS plastic, PMMA coated</b>
<b>Outer casing</b>	<b>Stainless Steel</b>

## OTHER OPTIONS

The shower unit can be supplemented with a variety of add on items to increase the utility of the shower and meet the requirements of any given health and safety policy.



Platform actuation



Activation alarm switch for main shower and / or eyewash

## DIMENSIONAL DIAGRAM

